

# Americas

---

## SOCIETY

January–March 2016  
CULTURE PROGRAMS



JANUARY–MARCH 2016



/EXHIBITION/

CLOSES ON JANUARY 23, 2016

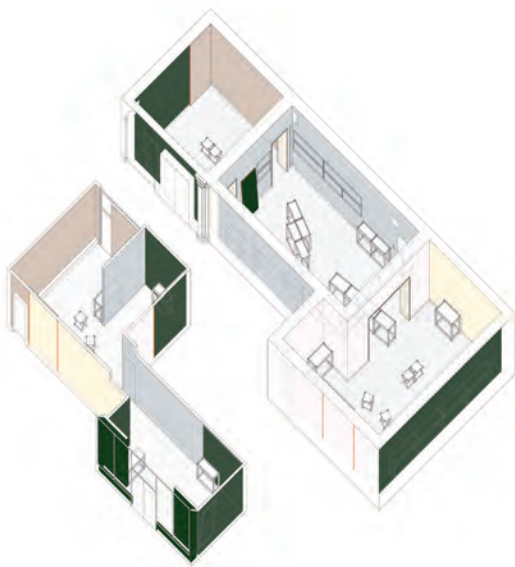
***Boundless Reality: Traveler Artists' Landscapes  
of Latin America from the Patricia Phelps de  
Cisneros Collection***

Jointly presented at two venues, the exhibition explores Latin American traveler art of the 19th century. Americas Society's section focuses on Auguste Morisot's archive of photography, drawings, and prints. The exhibition is curated by Harper Montgomery, Hunter College's Patricia Phelps de Cisneros Professor in Latin American Art, along with Hunter College MA and MFA students.

**Venues:** Americas Society and Hunter College (Bertha and Karl Leubsdorf Art Gallery Hunter West Building, Entrance on 68th Street between Park Avenue and Lexington Avenue)

**Gallery hours:** Wednesdays to Saturdays, 12:00 to 6:00 P.M.

**Free Admission**



/TALK/

TUESDAY, JANUARY 12, 6:30 P.M.

## Exhibition Design: A Talk by Prem Krishnamurthy and Shannon Harvey

Prem Krishnamurthy and Shannon Harvey of Project Projects studio discuss the dynamic exhibition design of *Boundless Reality*. These highly-praised experts contextualize the active role of exhibition display in shaping the audience's reception of artworks and artifacts.

**Admission: Free for Americas Society Members; \$10 for non-members. Free for Hunter College students (with ID).**

/CONCERT/

THURSDAY, JANUARY 28,  
7:00 P.M.

## Vanessa Perez: *Spain*

Venezuelan pianist Vanessa Perez returns to Music of the Americas to celebrate the launch of her latest CD release on the Steinway label, featuring music by Manuel de Falla and Claude Debussy.

**Admission: Free for Americas Society Members; \$20 for non-members.**



/CONCERT/

THURSDAY, FEBRUARY 11, 7:00 P.M.

## Magos & Limón

Mexican singer Magos Herrera, one of the most distinctive voices on the Latin American jazz scene, joins forces with Spanish flamenco guitarist Javier Limón for a special Valentine's concert, with a selection of *boleros* and *canciones*.

**Admission: Free for Americas Society Members;  
\$20 for non-members.**



/CONCERT/

FRIDAY, FEBRUARY 19, 7:00 P.M.

## Brasil Guitar Duo: Leo Brouwer

Brasil Guitar Duo returns to Americas Society to celebrate their latest release: the complete two-guitar works of Cuban composer Leo Brouwer on NAXOS.

Part of the Composers Now Festival.

**Admission: Free for Americas Society Members;  
\$20 for non-members.**



TOP: MAGOS & LIMÓN,  
COURTESY OF THE ARTISTS;  
BOTTOM: BRASIL GUITAR  
DUO, IMAGE BY GAL OPPIDO



/PANEL/

TUESDAY, FEBRUARY 23, 6:30 P.M.

## Panel Discussion: *How to Look At Mexican Art*

At The New School, University Center, 63 Fifth Avenue, UL 104

Americas Society Visual Arts Director Gabriela Rangel and independent Mexican curator Tatiana Cuevas, co-curators of the exhibition *Hemispheres: A Labyrinth Sketchbook* by Silvia Gruner, discuss the work of Silvia Gruner with Irmgard Emmelhainz, independent writer, researcher and adjunct professor at La Esmeralda and Centro, Mexico City. Gruner is one of the most important Mexican artists of her generation. She has greatly contributed to putting Mexico on the map of global contemporary art since the 1990s. The panel is moderated by Soyoung Yoon, Program Director and Assistant Professor of Visual Studies, Eugene Lang College of Liberal Arts, The New School.

**Admission: Free**

/CONCERT/

TUESDAY, FEBRUARY 23, 7:00 P.M.

## Momenta Quartet: Julián Carrillo

Momenta Quartet started a journey of discovery of Mexican composer Julián Carrillo's (1875–1965) music in a 2011 Music of the Americas concert, which they took to other stages throughout the US and Mexico. This new concert is the fruit of their collaboration with musicologist Alejandro Madrid, who recently published *In Search of Julián Carrillo and Sonido 13*.

**Admission: Free for Americas Society Members;  
\$20 for non-members**



/EXHIBITION OPENING/

WEDNESDAY, FEBRUARY 24, 7:00 P.M.

## *Hemispheres: A Labyrinth Sketchbook by Silvia Gruner*

Curated by Gabriela Rangel and Tatiana Cuevas.

In her work, Silvia Gruner (Mexico City, 1959) explores the relationship between the *body* (personal) and the *identity* (collective), a dichotomy reflected in the installation *Hemispheres*, which premieres in this exhibition. Surrounding this new piece, a selection of seminal works from earlier periods shows how Gruner blends feminism and post-conceptualism with experimental film, photography, installation and performance.

**On view: Thursday, February 25–Saturday, June 18, 2016**

**Americas Society's Visual Arts Gallery opening hours: Wednesdays to Saturdays, 12 to 6 P.M. Free admission**



/GUIDED TOUR/

THURSDAY, FEBRUARY 25, 6:30 P.M.

## *Guided tour of Hemispheres*

Guided tour with the artist Silvia Gruner and curators Gabriela Rangel and Tatiana Cuevas.

**Admission: Free for Americas Society Members; \$10 for non-members.**





/FILM/

TUESDAY, MARCH 15, 7:00 P.M.

## ***La Calle de los Pianistas I: Film screening***

The debut of young Argentine director Mariano Nante, *La Calle de los Pianistas*, takes us into the lives of an illustrious Argentinean family of pianists. From their home on a small street in Brussels, the film follows them as they prepare a concert at the legendary Teatro Colón in Buenos Aires.

Q&A with the creative team after the screening. Presented in collaboration with Cinema Tropical.

**Admission: Free. Pre-registration required.**

/CONCERT/

WEDNESDAY, MARCH 16, 7:00 P.M.

## **La Calle de los Pianistas II: Karin Lechner and Natasha Binder in concert**

Following up on the screening of the documentary *La calle de los pianistas*, this concert features mother-daughter piano duo Karin Lechner and Natasha Binder performing music by Milhaud, Ravel, Bach, Bizet, Ziegler, and more.

**Admission: Free for Americas Society members;  
\$20 for non-members**



/CONCERT/

MONDAY, MARCH 28, 7:00 P.M.

## **Modernismo Rumbero**

In 1928, the founders of the Pan-American Association of Composers hoped to foster the creation of a hemispheric musical style by performing the most advanced music of the hemisphere. This program, featuring the wind quintet City of Tomorrow, soprano Sarah Brailey, violist Stephanie Griffin, and pianist Alexandre Moutouzquine, revisits music by Latin American composers performed at the PAAC's concerts.

Part of the 'Modernismo Rumbero' series.

**Admission: Free for  
Americas Society members;  
\$20 for non-members**





# Americas / SOCIETY

AMERICAS SOCIETY

**680 PARK AVENUE (AT 68TH STREET)**

**NEW YORK, NY 10065**

**WWW.AS-COA.ORG**

GENERAL INFORMATION

**212.249.8950**

Unless otherwise noted, all events take place at Americas Society and are wheelchair accessible.



LIKE US ON FACEBOOK:

**AMERICAS SOCIETY/COUNCIL OF THE AMERICAS**

**MUSIC OF THE AMERICAS**

**VISUAL ARTS AT AMERICAS SOCIETY**



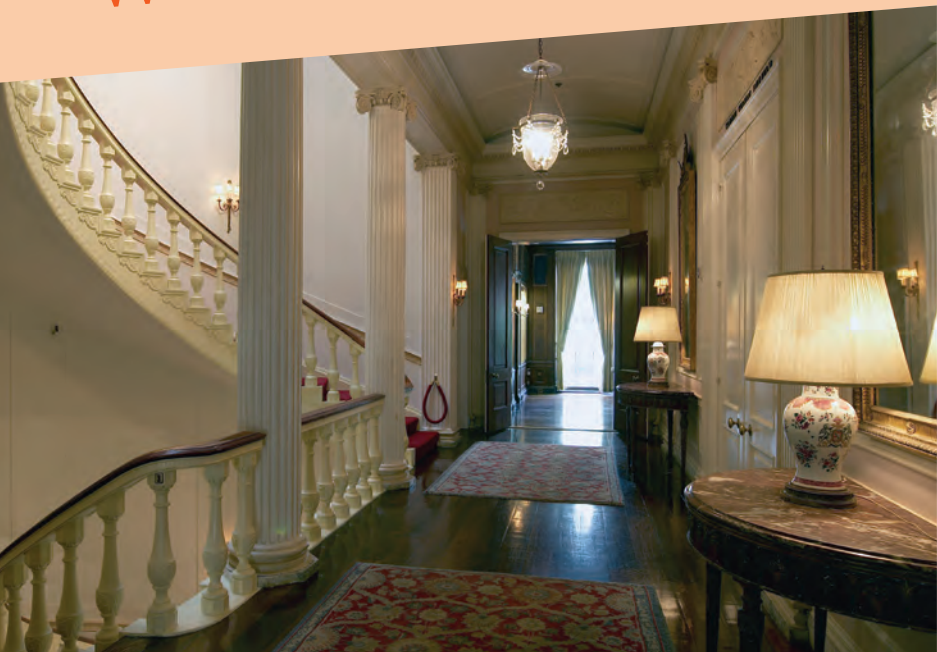
FOLLOW US ON TWITTER:

**@ASCOA**

**@MUSICAMERICAS**

**@ASARTGALLERY**

**WWW.AS-COA.ORG**



# CULTURE PROGRAMS

## *Admission & Tickets*

### **AMERICAS SOCIETY MEMBERS: FREE!**

Register online using your personal login. Visit [www.as-coa.org/calendar](http://www.as-coa.org/calendar) and select the event you would like to attend to reserve your tickets.

### **NON-MEMBERS: TICKETS AVAILABLE ONLINE**

Visit [www.as-coa.org/calendar](http://www.as-coa.org/calendar), select the event you would like to attend, and click the non-member registration link to purchase tickets. For concerts, \$10 tickets are available for students with ID and seniors at the door on the day of the event.

## *Membership at Americas Society*

### **BECOME A CULTURAL CIRCLE MEMBER TODAY!**



Enjoy exclusive benefits including free admission to our culture programs and access to meet-the-artist receptions. Additional benefits include member rate admission to our public policy programs, guest privileges, invitations to VIP visual arts previews and concerts, subscriptions to our publications, and much more!

Visit <http://www.as-coa.org/culturalcircle> to explore our different membership levels and to join today!

### **YOUNG PROFESSIONALS OF THE AMERICAS MEMBERSHIP**



Young Professionals of the Americas (YPA) is an international network that provides a platform for young professionals in their 20s and 30s to connect around the latest trends in the Americas through its New York City and Miami chapters. Members come from various nationalities and represent a diverse spectrum of professional sectors, including venture capital and finance, fashion, government, design, consulting, law, and the arts. Membership offers exclusive access to our networking and social events, such as private art fair tours, concerts, and intimate talks with industry leaders around professional development.



LEFT: INTERIOR VIEW OF 680 PARK AVENUE; ABOVE: NYSE OPENING BELL & TOUR FOR YPA MEMBERS, JULY 29, 2015. PHOTO BY ELISEU CAVALCANTE

## /MUSIC FUNDERS/

The MetLife Foundation Music of the Americas concert series is made possible by the generous support of Presenting Sponsor MetLife Foundation.

The Winter 2016 Music program is also supported, in part, by an award from the National Endowment for the Arts, by public funds from the New York City Department of Cultural Affairs in partnership with the City Council, the Mexican Cultural Institute of New York, and Cuba Travel Network.

**MetLife Foundation**



## /VISUAL ARTS FUNDERS/

The exhibition *Boundless Reality: Traveler Artists' Landscapes of Latin America from the Patricia Phelps de Cisneros Collection* is a collaboration between Hunter College, Americas Society, and the Colección Patricia Phelps de Cisneros.

The presentation of the exhibition at Americas Society is made possible by the generous support of Mr. Alejandro Bulgheroni and Mrs. Bettina Bulgheroni, Adriana Cisneros de Griffin and Nicholas Griffin, Agnes Gund, The Lauder Foundation – Leonard & Judy Lauder Fund, Mr. and Mrs. Peter and Melanie Munk, Alvaro Saieh B., Alice Walton, and Art Agency Partners.

The Winter 2016 Visual Arts program is supported, in part, by public funds from the New York City Department of Cultural Affairs in partnership with the City Council.

PHILLIPS is the Lead Sponsor of Americas Society's Visual Arts Program.

**PHILLIPS**

**HUNTER**  
The City University of New York

FUNDACIÓN  
CISNEROS  
COLECCION  
PATRICIA  
PHELPS DE  
CISNEROS



The exhibition *Hemispheres: A Labyrinth Sketchbook* by Silvia Gruner is made possible by the generous support of PHILLIPS, Lead Sponsor of Americas Society's Visual Arts Program.

The exhibition is also supported, in part, by an award from the National Endowment for the Arts; the New York State Council on the Arts with the support of Governor Andrew Cuomo and the New York State Legislature; and by public funds from the New York City Department of Cultural Affairs, in partnership with the City Council.

Additional support is provided by Mex-Am Cultural Foundation and Harpo Foundation.

In-kind support is graciously provided by Museo Amparo, Puebla; the Mexican Cultural Institute of New York, the Consulate General of Mexico in New York, AMEXCID, and the Mexico Tourism Board; and Hotel Americano.

**PHILLIPS**



**Council on  
the Arts**



**Mex-Am Cultural Foundation Inc.**

**harpo**foundation



**Museo Amparo**





## 1. Your Information:

NAME

MR.

MRS.

MS.

OTHER \_\_\_\_\_

ADDRESS

CITY

STATE

ZIP CODE

PHONE/MOBILE

EMAIL

GO PAPERLESS! I'D LIKE TO RECEIVE ALL COMMUNICATIONS VIA EMAIL

## 2. Select Your Membership:

**INDIVIDUAL: \$100** (\$67 tax-deductible)  
Complimentary admission to all culture programs\*

**INDIVIDUAL PLUS: \$250** (\$174 tax-deductible)  
Bring a different guest to all culture programs for free\*

**SILVER LEVEL: \$500** (\$320 tax-deductible)  
Access select YPA events and all culture programs\*

**GOLD LEVEL: \$1,000** (\$770 tax-deductible)  
Exclusive invitations plus two guests to VIP culture events  
including private exhibitions and receptions\*

\*For the full list of benefits visit [www.as-coa.org/culturalcircle](http://www.as-coa.org/culturalcircle)

## 3. Complete Your Payment Information:

Your Membership Contribution \$ \_\_\_\_\_

Additional Tax-Deductible Contribution \$ \_\_\_\_\_

Total Amount \$ \_\_\_\_\_

MY CHECK PAYABLE TO AMERICAS SOCIETY IS ENCLOSED

PLEASE CHARGE:

AMERICAN EXPRESS

VISA

MASTERCARD

CARD NUMBER

EXP.

SIGNATURE

ENCLOSED IS A FORM OF MY COMPANY'S MATCHING GIFT PROGRAM

**Please return with your payment by mail:**

Americas Society  
Attn: Membership  
680 Park Avenue  
New York, NY 10065

**QUESTIONS? Email us at [membership@americas-society.org](mailto:membership@americas-society.org)**